



**U.S. Department of Agriculture, U.S. Forest Service
Gila National Forest
Wilderness Ranger District**

ROAD AND TRAIL CLOSURE

PROHIBITIONS

Pursuant to 16 U.S.C. § 551 and 36 C.F.R. § 261.50(b) the following is prohibited on the National Forest System (NFS) roads and trails in the Wilderness Ranger District, Gila National Forest, described below and shown on the attached map incorporated into this Order as Exhibit A (the "Described Roads/Trails"):

1. Being on the Described Trails. 36 C.F.R. § 261.55(a).
2. Being on the Described Roads. 36 C.F.R. § 261.54(e).

EXEMPTIONS

Pursuant to 36 C.F.R. § 261.50(e), the following persons are exempt from this Order:

1. Persons with Forest Service Permit No. FS-7700-48 (Permit for Use of Roads, Trails, or Areas Restricted by Regulation or Order), specifically exempting them from this Order or a written determination by a Forest Service authorized officer that a permit is not required under 36 C.F.R. § 251.50(e)(1) or (2).
2. Any Federal, State, or Local Officer, or member of an organized rescue or firefighting resource in the performance of an official duty.

DESCRIBED ROADS/TRAILS

National Forest System Trail (NFST) # 771 - From the East Fork of the Gila River, west approximately 4 miles to the intersection with NFST # 27.

NFST # 27 – from the intersection of NFST # 804 in a predominately northwest direction approximately 4 miles to the intersection with NFST # 26.

NFST # 26 – from its beginning at the end of National Forest System Road (NFSR) 704, in a predominately northwest direction for approximately 10.5 miles, to the intersection of NFST # 23.

NFST # 772 – from the end of NFSR 4208P, northwest for approximately 3.5 miles to the Black Mountain Lookout tower.

NFST # 157 – from Jordan Hot Springs, west for approximately 5 miles to its intersection with NFST # 53.

NFSR # 704 – in its entirety.

NFSR # 4208P – in its entirety.

PURPOSE

The purpose of this Order is to protection public health and safety due to the Pass Fire.

IMPLEMENTATION

1. This Order shall be in effect from June 30, 2023, at 4:00 P.M. through August 15, 2023, at 0800 A.M., unless rescinded, whichever occurs first.
2. A map identifying the Described Roads/Trails are attached and made part of this Order as Exhibit A. For a digital version of this Order and Exhibit A, go to [Gila National Forest - Alerts & Notices \(usda.gov\)](https://www.usda.gov/gilafire/alerts-notices)
3. Unless otherwise expressly defined in this Order, the terms used in this Order are defined by the regulations of the Secretary of Agriculture, 36 C.F.R. Chapter II, Parts 200-299. If there are terms in this Order that are not expressly defined in the Order or 36 C.F.R. Chapter II, Parts 200-299, their meaning shall be determined by their plain language definitions.
4. A violation of the above prohibitions is punishable as a Class B misdemeanor by a fine of not more than \$5,000 for individuals and \$10,000 for organizations, or by imprisonment for not more than six months, or both. 16 U.S.C. § 551; 18 U.S.C. §§ 3559, 3571, and 3581.
5. Contact the Wilderness Ranger District in Mimbres NM, (575) 536-2250, and Gila National Forest Supervisor's Office in Silver City NM, (575) 388-8201, for more information about this Order.
6. This Order supersedes any previous Orders prohibiting the same or similar acts on the same Described Roads/Trails

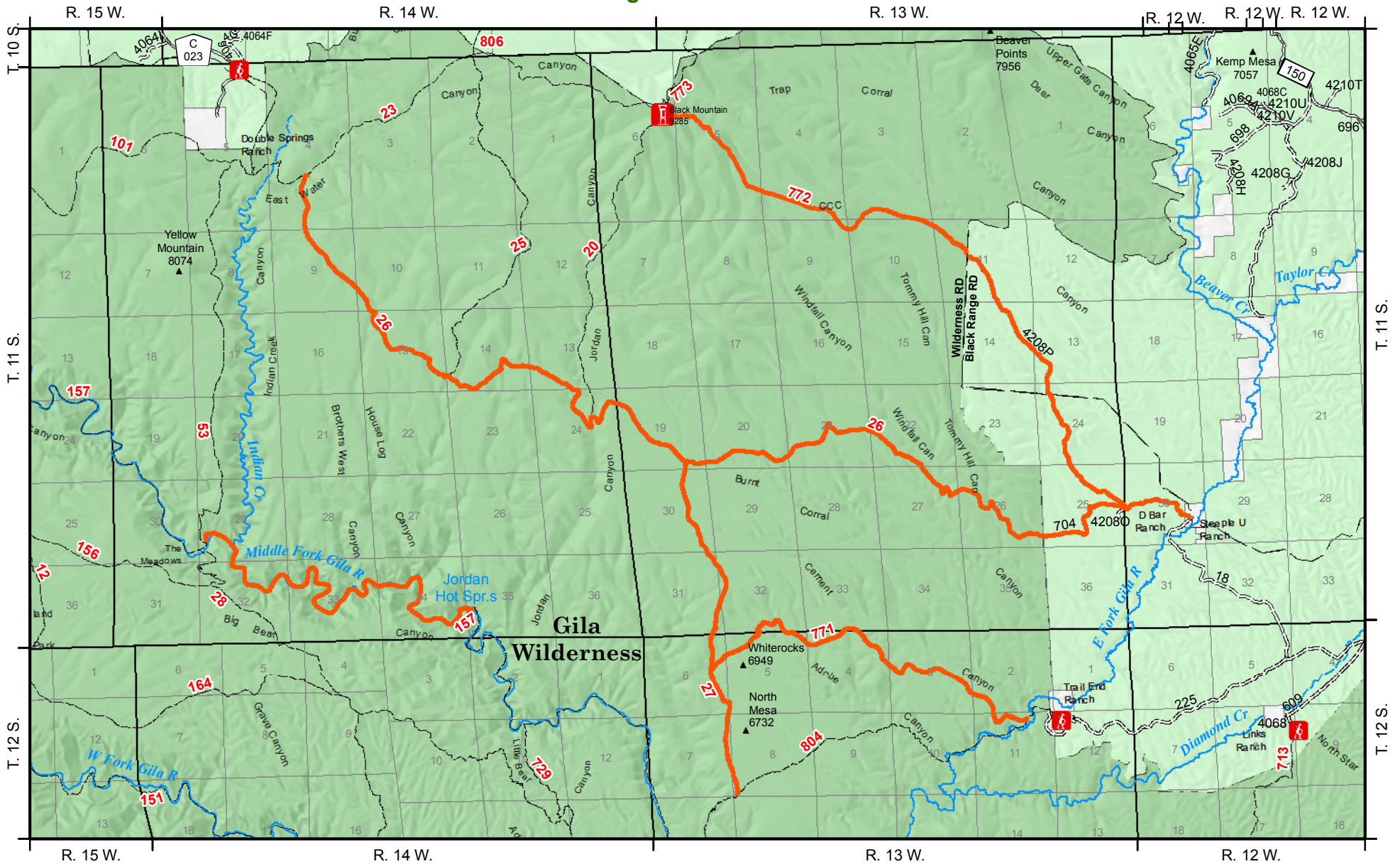
Signed and issued on June 30, 2023.

CAMILLE HOWES
Forest Supervisor
Gila National Forest



Road and Trail Closure Order - Order Number: 03-06-02-23-006, Exhibit A

Gila National Forest - Wilderness Ranger District



Disclaimer

The USDA Forest Service uses the most current and complete data available. GIS data and product accuracy may vary. Using GIS products for purposes other than those for which they were intended may yield inaccurate or misleading results. The USDA Forest Service reserves the right to correct, update, modify, or replace GIS products without notification. This map is not a legal land line or ownership document. Public lands are subject to change and leasing, and may have access restrictions; check with local offices. Obtain permission before entering private land.

Map Author: bgpark 6/28/2023

- Described Closed Road or Trail
- Non-Motorized Trail
- Improved Road, Dirt
- Unimproved Road

Land Ownership

- US Forest Service
- FS Wilderness
- Private

